

**lavamac**

your laundry solution



Hygiene wash concept

[www.lavamac.eu](http://www.lavamac.eu)

hygiene wash concept

Lavamac offers you the best defence  
against cross contamination  
of superbugs within your laundry



# Stop cross contamination now!

[www.lavamac.eu](http://www.lavamac.eu)



## STUDIES SHOW THAT LINEN IS A MAJOR FACTOR FOR THE TRANSFER OF INFECTIONS AND SUPERBUGS

- 10 to 15 % of Nosocomial infections (leading to an average extra 4-5 days in hospital, and in extreme cases, the death of the patient) are due to unsatisfactory linen hygiene
- Old people and children are more at risk of infection due to their less efficient immune systems
- Operators must have total care management of the laundry to maintain a high level of hygiene in their global production, so ensuring that product is free of certain bacteria (ie. Staphylococcus aureus, Salmonella, Listeria, etc...)

This is such an important subject that Lavamac has decided to partner with two microbiological institutes and test under real conditions the recontamination risk that apply to the laundry.

These tests were made in a laundry using Lavamac barrier washers with a physical separation of the soiled and clean sides of the laundry rooms. The establishments are certified to be in conformity with RABC\* by an external organisation (less 12 CFU/25 cm<sup>2</sup>).

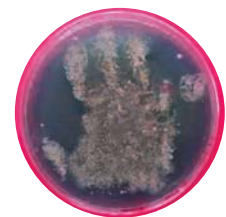
\* The RABC is an abbreviation of Risk, Analysis, Biocontamination and Control. RABC is a Quality Management System and it complies with other QM and HACCP systems. The RABC system is implemented to avoid microbiological contamination of persons and products by laundry operation and to provide defined microbiological quality of laundered goods. The implemented RABC-System is controlled by external experts on a yearly basis.

	Type Hands	Hands (CFU**/hand)	Air (CFU**/m <sup>3</sup> )	Trolleys (CFU**/25cm <sup>3</sup> )
Soiled area	Total	1x10 <sup>3</sup>	NM* (>>3.8x10 <sup>2</sup> )	103
	Fungi	28	NM* (>>1.6x10 <sup>2</sup> )	3
Clean area	Total	>397	2x10 <sup>2</sup>	2.25
	Fungi	8	50	2.25

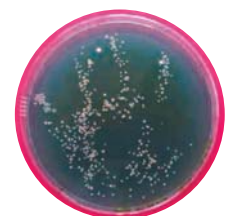
\* NM: No Measurable / too many germs

\*\* CFU: colony-forming unit is a measure of viable bacterial numbers

- **The largest amount of germs are transmitted by land**
- **Air is an important vector of propagation of micro-organisms**
- **Surfaces are a main vehicle of germ transmission too**



Pic. 1 Contamination of a hand with glove in soiled side



Pic. 2 Contamination of a hand without glove in clean side

LAVAMAC OFFERS YOU THE BEST DEFENCE AGAINST CROSS CONTAMINATION OF SUPERBUGS WITHIN YOUR LAUNDRY

hygiene wash concept



A SOLID FOUNDATION FOR YOUR LAUNDRY HYGIENE  
**FIGHT FOR HYGIENE**

**lavamac**

your laundry solution

# Your partner in the fight for hygiene

Experts in Hygiene

LAVAMAC HAS DEVELOPED A FULL RANGE OF BARRIER WASHERS IN ORDER TO SIMPLIFY AND TO OPTIMIZE THE SETTING UP OF YOUR LAUNDRY OFFERING THE BEST PROTECTION FOR EMPLOYEES, PATIENTS AND THE BEST PREVENTION FOR THE SPREADING OF MICRO-ORGANISMS AND SUPERBUGS.

**When adopting the Lavamac hygienic solution, the operation of your laundry conforms with best hygienic practices:**

- Respect for “walk forward” as in HACCP principles or the International Food Standard
- Physical wall separates the laundry in two parts: soiled and clean area
- No risk of contact or crossing between soiled and clean linen
- As an option, separate atmosphere pressures can be created between clean and soiled areas to prevent airborne recontamination
- Specific “hygienic” programs for decontamination of laundry
- Offers the best protection against the spreading of infections
- Guarantees your investment in the future by anticipating the next regulations

**Lavamac is innovative and particularly in:**

## ■ QUALITY

Highest quality components and raw material in the manufacturing process ensure a long life span and a safe investment.

## ■ ERGONOMICS

A complete range of unique pass through models with large door openings either side for easy loading and unloading.

## ■ ENVIRONMENT

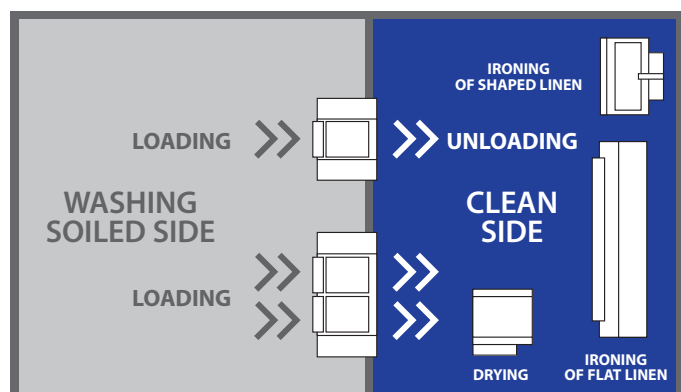
Our dedicated engineers work continually to reduce water and electrical consumption and increase the efficiency of our machines. Water recycling is an option. Advanced waste management is applied in our production process.

## ■ CHOICE

Large capacity range allows a tailor made solution to suit your budget and operational requirements.

## ■ SIMPLICITY

Our own microprocessors, means a simple and easy to use control system for the user. And a uniform design across the whole range. Which allows technicians to have a standard programming logic to ensure the best technical support.



hygiene wash concept



## RECOMMENDATIONS AND REGULATIONS

## THAT ARE THE EU GUIDELINES AND REGULATIONS?

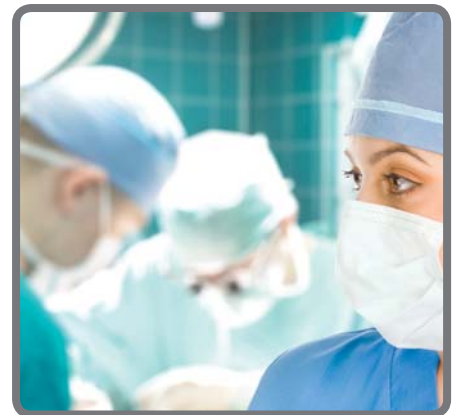
NF EN 14065 NORM – “LAUNDRY PROCESSED TEXTILES – BIO-CONTAMINATION CONTROL SYSTEM”  
This European Standard describes a Risk Analysis and Biocontamination Control (RABC) system to enable laundries to continuously assure the microbiological quality of the laundered textiles. (The admitted value for clean linen is less 12 CFU/25 cm<sup>2</sup>). This European Standard is compatible and may be easily integrated into an international recognized quality global management system. The norm specifies that “the management shall identify, provide and maintain the facilities it needs to achieve the control of biocontamination.”

### HEALTH CARE

#### BP G 07-223:2004 REFERENTIAL: LAUNDRY PROCESSED TEXTILIES

This specifies best laundry practice as follows:

- A physical separation of the room between soiled area and clean area is recommended while using barrier washer-extractors
- Hand washing is always necessary following a described procedure
- The “walk forward” concept applies



### NURSING HOMES

#### NF X50-058 NORM – SERVICE LEVEL

This norm, applicable for nursing homes, concerns all services offered to patients. It states that if laundry is being processed in house, there should be a separate soiled and clean linen area.

### PHARMACEUTICAL & FOOD INDUSTRY

#### MANUAL OF ACCREDITATION: GLF – REFERENCE 4

This specifies that the laundry function is organised to process the linen treatment by a standardised procedure:

- Separation of soiled and clean linen must be ensured during transport
- The linen treatment is the object of protocols and evaluations
- The employees of the laundry have been trained in the hygiene rules applying to linen
- Process controls are reviewed regularly



## LAVAMAC CAN CONSULT OVER THE WHOLE PROCESS

### LAVAMAC HYGIENIC SYSTEM PROVIDES A TOTAL SOLUTION

#### ■ COLLECTING AND SORTING

The presorting of the laundry is completed by the collector staff and the different wash loads separated in wash types, by staff using gloves for protection.

#### ■ STORAGE

Shortest storage time should be applied up to a maximum of 48 hours. Trolleys have to be clean before each use. Specific room with lower air pressure, washing station and floor U-bend should be used.

#### ■ WASHING

Wash loads of the same type are processed together to avoid handling of the dirty or clean laundry. The Lavamac Trace-tech® system controls Temperature, Mechanics, Time and Chemicals and thus ensures the optimal wash quality.

#### ■ FINISHING

Handling of the clean laundry is completed by staff who have used hand disinfection and wearing gloves to avoid the recontamination of the laundry.

#### ■ CLEAN STORAGE

Store directly after processing – cover with plastic film / in closed cabinets – clean room and trolleys regularly – respect separated flows between clean and soiled linen.

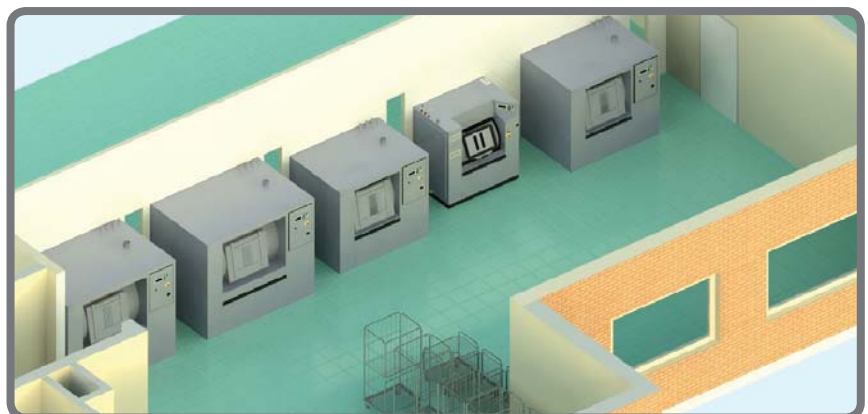
## Lavamac accompanies you in your project!

Our team of specialized advisers, experienced designers, and Lavamac certified partners is ready to assist you in the realization of your project, helping you to meet your specific requirements and bringing you:

1. An audit of your laundry
2. The definition of needs
3. The technical drawing with energy reservations
4. The installation and maintenance of the machines
5. The training of the technical staff and users



Photo of the PC screen with hospital laundry



Plan of hygienic laundry project in 3D.

# The Lavamac Tools that give you more control



With the Lavamac Softwash wet cleaning solution, the machines become fully multi-purpose and flexible to meet your total needs. The operator has the option of selecting a softwash (wet cleaning) program and the machine takes care of the rest. This allows the same machine to treat all laundry types including delicate fabrics.



This new generation of Lavamac micro programmers offers you complete freedom of programming. This is the guarantee for you to optimize and adapt the process at any time and to ensure the easy integration of new washing methods and soaps.



The Trace-tech® management software provides record of each wash load which allows you to ensure conformity with Hygienic standards. This can be stored and recalled whenever necessary. Parameters are continually controlled and stored to bring you a detailed report of the washing process. You are also informed if the machine can not complete required process.



Whilst loading your machine, the Graphitronic® displays the weight of wash load. The machine will then adjust the water and energy consumption to suit to load. Thus, you have a guaranteed wash result, reduced energy consumption, so optimising productivity, and controlling of your operating costs.



Together with Optiload® and Trace-tech®, the Sample's tap ensures you have complete control and traceability of your washing and disinfection process.



hygiene wash concept

# BIG RANGE



# Big Range

[www.lavamac.eu](http://www.lavamac.eu)

LMA 160



LMA 260



LMA 330



LMA 440



LMA 660



Capacity 1:10	16	26	33	44	66
Volume of the drum	165	265	332	442	663
Spin speed (rpm)	960	960	960	915	915
G-factor	335	335	335	350	350
Cabinet	Powder painted steel/ Stainless steel optional	Powder painted steel/ Stainless steel optional	Powder painted steel/ Stainless steel optional	Powder painted steel/ Stainless steel optional	Powder painted steel/ Stainless steel optional
Control	Graphitronic <sup>®</sup> as standard	Graphitronic <sup>®</sup> as standard	Graphitronic <sup>®</sup> as standard	Graphitronic <sup>®</sup> as standard	Graphitronic <sup>®</sup> as standard
Electrical Heating (kW)	18	24	36	45	54
Steam heating (bar)	3-8	3-8	3-8	3-8	3-8
Electrical connection	3 × 380-440V 50 Hz	3 × 380-440V 50 Hz	3 × 380-415V 50 Hz	3 × 380-440V 50 Hz	3 × 380-415V 50 Hz
Steam connection	3/4"	3/4"	3/4"	3/4"	3/4"
Water connection	1"	1"	1"	1"	1"
Dimensions H×W×D (mm)	1600×1410×1060	1600×1410×1060	1600×1560×1060	1650×1610×1170	1650×2160×1170
Net weight (kg)	990	960	1000	1140	1360
Gross weight (kg)	1090	1050	1090	1280	1510
Dimensions packed H×W×D (mm)	1840×1465×1175	1840×1465×1175	1840×1610×1175	1840×1660×1380	1840×2200×1380

LMA 700



LMA 900



LMA 1100



LMA 1400



LMA 1800



Capacity 1:10	70	90	110	140	180
Volume of the drum	700	900	1100	1400	1800
Spin speed (rpm)	800	800	754	720	695
G-factor	360	360	350	350	350
Cabinet	Stainless steel	Stainless steel	Stainless steel optional	Stainless steel	Stainless steel
Control	Graphitronic <sup>®</sup> as standard	Graphitronic <sup>®</sup> as standard	Graphitronic <sup>®</sup> as standard	Graphitronic <sup>®</sup> as standard	Graphitronic <sup>®</sup> as standard
Electrical Heating (kW)	54 or 72	54 or 72	72 or 96	72 or 96	-
Steam heating (bar)	6-8	6-8	6-8	6-8	6-8
Electrical connection	3 × 380-440V 50 Hz	3 × 380-480V 50 Hz	3 × 380-415V 50 Hz	3 × 380-480V 50 Hz	3 × 380-480V 50 Hz
Steam connection	1"	1"	1"	1"	1"
Water connection	3×1,5" / 1×3/4"	3×1,5" / 1×3/4"	3×1,5" / 1×3/4"	3×1,5" / 1×3/4"	3×1,5" / 1×1"
Dimensions H×W×D (mm)	1805×2025×1615	1805×2275×1615	1855×2325×1615	2075×2435×1805	2165×2585×1905
Net weight (kg)	2600	2810	2990	3550	4990
Gross weight (kg)	2760	2970	3150	3760	5310
Dimensions packed H×W×D (mm)	1985×2100×1740	1985×2355×1740	2080×2400×1740	2250×2485×1940	2265×2665×2040

**lavamac**

your laundry solution

**Lavamac**

Driemasten 126  
B-8560 Gullegem  
Belgium

Phone: +32 (0)56 43 52 00  
Fax: +32 (0)56 40 34 63  
E-mail: sales@lavamac.info

**Lavamac - Central and Eastern Europe**

Místecka 1116  
742 58 Příbor  
Czech Republic

Phone: +420 556 768 800  
Fax: +420 556 723 383  
E-mail: sales@lavamac.info



[www.lavamac.eu](http://www.lavamac.eu)